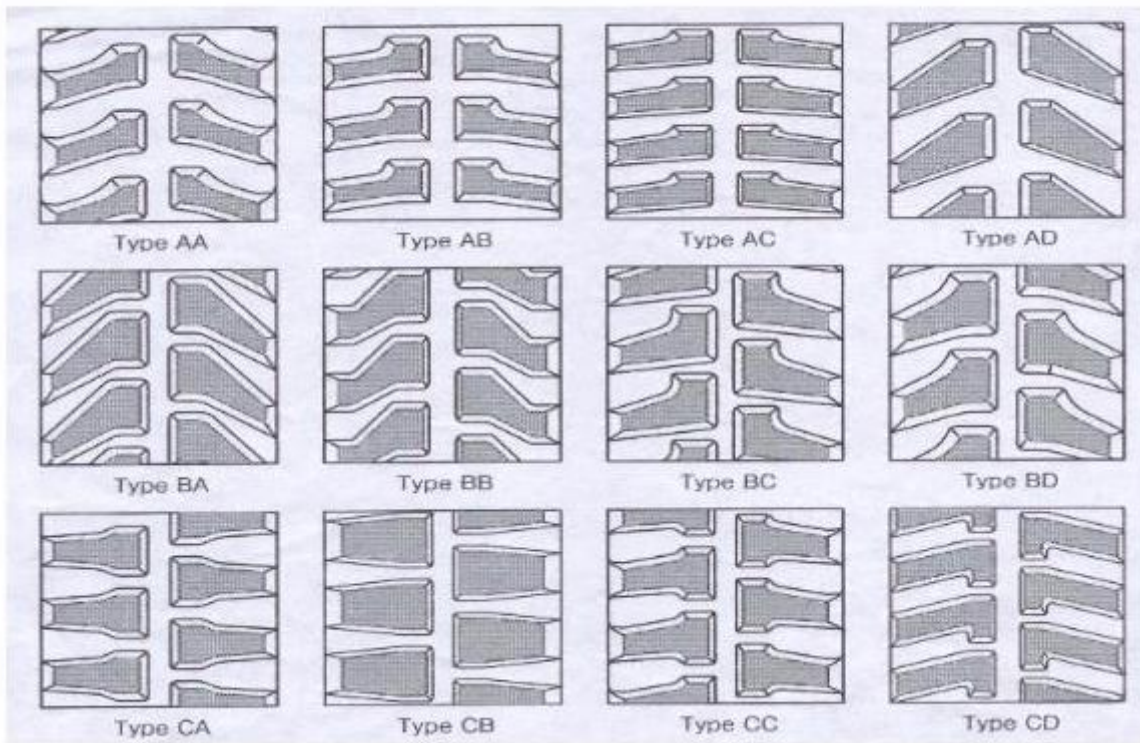
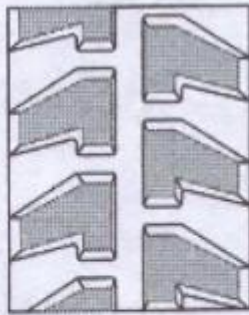


## Specifications

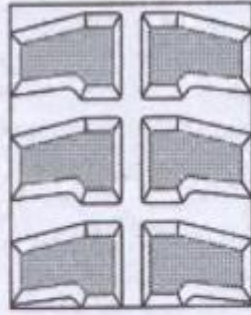
Track Width (mm)	Pitch (mm)	Lug Pattern	Guide Type	I.G.B.	O.G.B.	Apply Machine Weight (Kg)	Main Use		
				(mm)	(mm)		Agricultural Machine	Carrier Vehicle	Construction Machine
150	72	AB	A, B	24	62	500			*
180	60	AB	A, B	22	64	550			*
180	72	EG	A, B	22	68	700			*
180	72KM	AD	E	22	66	700			*
190	72	GA	A, B	24	70	800			*
200	72	AA	A, B	23	64	1100			*
230	72	EE	A, B	23	76	1400			*
230	48	BD	C	22	76	1500			*
230	96	EC	C	26	76	1500			*
230	101	DA	C	24	76	1500			*
250	72	EF	A, B	24	78	1600			*
250	52.5	BB	C, E	28	74	1500			*
250	47	BB	D, E	26	68	1500			*
260	96	EA	C	24	76	1500			*
260	109	DA	C, D	30	86	1800			*
280	72	FB	A, B	26	76	1800		*	*
280	106YM	EA	E	29	81	2000			*
300	55	BC	C, D	30	82	3500			*
300	52.5KM	CC	E	30	88	3500			*
300	109KM	EA	E	26	86	3500			*
300	52.5N	BA	C, D	31	82	3500			*
300	109N	EA	C, D	30	78	3500			*
300	52.5W	CA	C, D	42	94	3500			*
300	109W	EB	C, D	40	94	3500			*
300	55.5YM	LA	E	30	82	3200			*
320	84	KA	A, B	47	104	3500			*
320	90	FC	B	36	90	3000		*	
320	100	ED	A, B	32	84	3500			*
320	86KM	JA	E	36	86	3500			*
320	54	CE	C, D	30	82	3500			*
320	106YM	EA	E	30	82	3500			*
350	90	FD	B	26	78	1800	*		
350	90YM	FD	B	24	80	1800	*		
350	52.5	CD	C, D	38	90	3500			*
350	56	BD	C, D	38	88	3500			*
350	109	DA	C, D	40	98	3500			*
350	56KB	BB	C, E	38	90	3500			*
350	75.5YM	LA	E	38	98	3500			*
370	107YM	EA	E	38	92	3800			*
400	90	FD	B	26	76	1800	*		
400	90YM	FD	B	23	74	2000	*		
400	144	EB	C, D	42	98	5000			*
400	72.5KB	BB	C, E	50	106	5000			*
400	142KM	DB	E	26	94	6000			*
400	72.5N	CB	C, D	38	95	5000			*
400	72.5W	CE	C, D	50	108	5000			*
400	107YM	EA	E	38	92	4500			*
400	75.5YM	LA	E	40	100	4500			*
400	72.5YM	BC	E	32	90	5000			*

420	100	AC	A, B	50	98	4000			*
450	90	FB	B	36	85	4500	*	*	
450	100	FA	E	45	104	4500			*
450	84	HA	A	42	98	4000			*
450	71	CA	C, D	42	115	6000			*
450	76	CA	C, D	47	118	6000			*
450	163KM	DA	E	40	118	7500			*
450	83.5KM	BA	C	42	114	6000			*
450	81N	BA	C, D	40	116	6000			*
450	81W	BC	C, D	60	144	6000			*
500	90	FB	B	47	98	6500		*	*
500	92	BA	E	48	126	6500			*
600	100	FB	B	45	115	8500		*	*
700	100	FB	B	44	118	9500		*	*
750	150	FB	B	60	176	11000		*	*
800	125	FB	B	62	176	12000		*	*
800	150	FB	B	58	148	12000		*	*

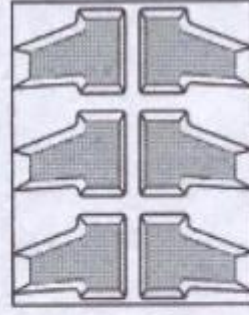




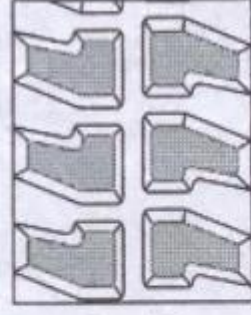
Type CE



Type DA



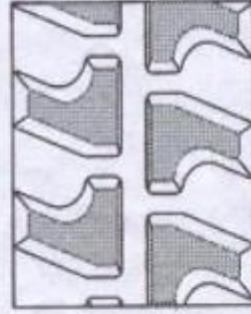
Type DB



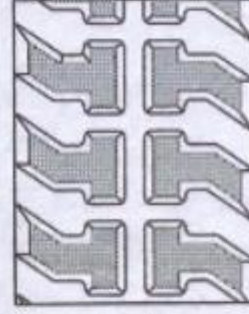
Type EA



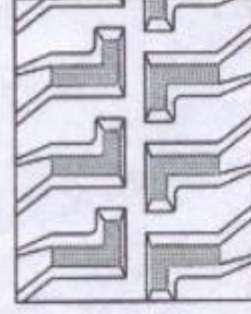
Type EB



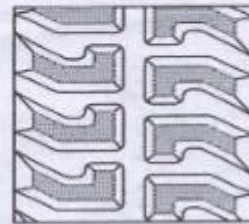
Type EC



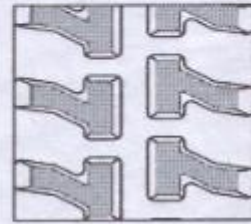
Type ED



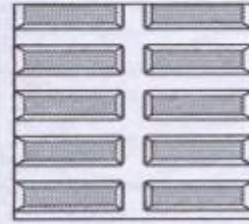
Type EE



Type EF



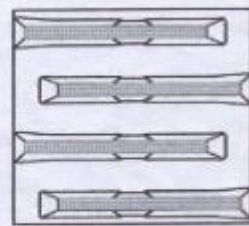
Type EG



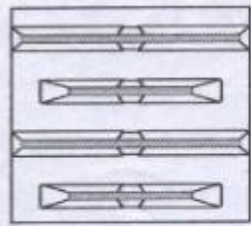
Type FA



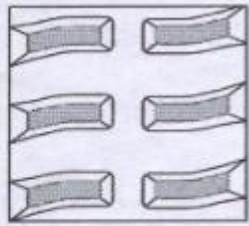
Type FB



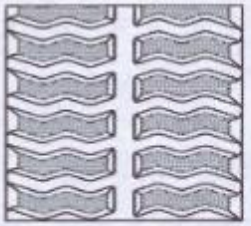
Type FC



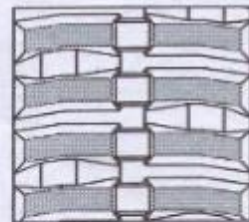
Type FD



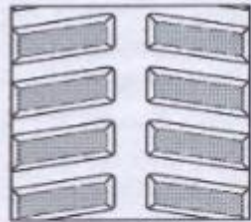
Type GA



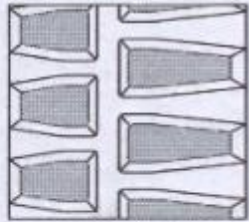
Type HA



Type JA



Type KA



Type LA

## Track Size Identification

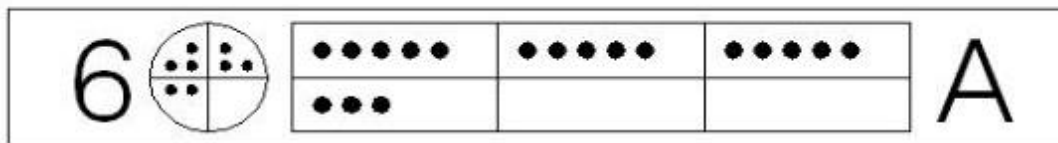
YUNHE adopts the following mark to stand for the size

Example: 260×96×38

260: Track width (mm)

96: Pitch length (mm)

38: Number of link



## Marks of Operator and Production Date

※Above is that the A Operator made rubber track on 18th August 2006

### Structure

Rubber track is a kind of rubber driving band composed of rubber compound, iron core, steel cords and fiber composite material. Rubber track runs on construction machinery, agricultural machinery, tracked carriers and compact tracked loaders.

YUNHE has more experience in jointless rubber track technology. There is no overlapping joint on our steel cord. Therefore most of the problems associated with traditional rubber tracks are solved.

Rubber track is classified into conventional type and interchangeable type.

